



Fir Park | Harlow | CM19 4JU

Offers In Excess Of £425,000



Fir Park | Harlow | CM19 4JU

Offers In Excess Of £425,000

A WELL PRESENTED THREE BEDROOM SEMI DETACHED HOUSE with driveway and garage to side. The ground floor comprises of a spacious entrance hall, lounge open-plan to dining room, conservatory and fitted kitchen. Upstairs benefits from two double bedrooms, a single bedroom, WC and family bathroom. The South-West facing rear garden is fairly low maintenance with access into the garage. Fir Park is a sought-after private development on the South West of Harlow located off of Kingsmoor Road. The property is available for sale with no onward chain. Online virtual tour available.

- Three Bedrooms
- Garage & Driveway To Side
- Council Tax Band: D
- Semi-Detached House
- Sought-After Location
- EPC Rating: C

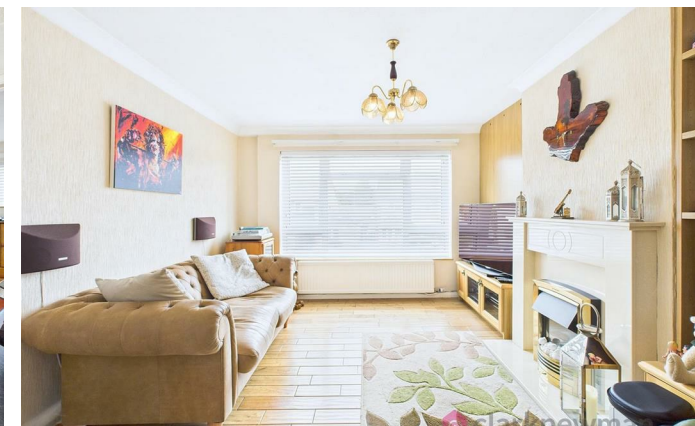
#### Front

Laid to lawn with concrete steps to front door and access into garden. Variety of shrubs and plants. To the side of the property there is a concrete double driveway and single garage with up and over door.

#### Entrance Hall

13'6" x 6'6" (4.11m x 1.98m)

UPVC double glazed windows and door. Internal door to lounge, doorway to kitchen. Radiator to wall. Stairs to first floor.





### Lounge

13'6" x 11'0" (4.11m x 3.35m)

UPVC double glazed window to front with radiator below. Gas fireplace with surround. Built-in shelving unit. Internal door to entrance hall. Opening to dining room.

### Dining Room

11'0" x 9'1" (3.35m x 2.77m)

Double glazed patio door to conservatory, internal door to kitchen and opening to lounge. Radiator to wall. Large fitted shelving unit.

### Kitchen

11'1" x 8'2" (3.38m x 2.49m)

UPVC double glazed window and door to garden. Doorway to entrance hall, internal door to dining room. Laminate worktops with a range of wall and base units. Ceramic 1.5 sink and drainer, integral oven and hob. Plumbing for washing machine, under stairs storage.

### Conservatory

9'3" x 9'10" max (2.82m x 3.00m max)

UPVC double glazed conservatory with fitted blinds and French doors to garden. Sliding patio door to dining room.

### Landing

9'3" x 3'9" (2.82m x 1.14m)

Internal doors to bedrooms. Stairs to ground floor. UPVC double glazed window to side aspect. Loft hatch.

### Bedroom One

13'6" x 10'0" (4.11m x 3.05m)

UPVC double glazed window to front aspect, radiator to wall. Full length built-in fitted wardrobes. Internal door to landing.

### Bedroom Two

11'2" x 9'11" (3.40m x 3.02m)

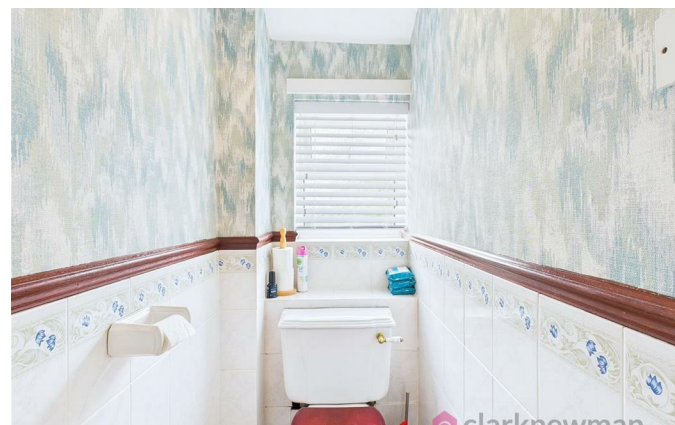
UPVC double glazed window to rear aspect, radiator to wall. Built-in airing cupboard housing hot water cylinder. Internal door to landing.

### Bedroom Three

9'8" x 7'6" (2.95m x 2.29m)

UPVC double glazed window to side aspect, radiator to wall. Built in storage cupboard over stairs. Internal door to landing.





## WC

5'0" x 3'0" (1.52m x 0.91m)

UPVC double glazed window to rear aspect. White WC. Internal door to landing.

## Bathroom

8'6" x 4'11" (2.59m x 1.50m)

UPVC double glazed window to rear aspect, radiator to wall. White pedestal sink and bath with shower over bath. Internal door to landing.

## Garden

30' approx (9.14m approx )

South-West facing rear garden with patio, lawn and raised flower beds. Various shrubs and plants. Access to front via timber gate and external door into garage.

## Garage

Up and over garage door to front. Partitioning wall separating front of garage to rear storage room. External UPVC double glazed door into garden. Lighting and power.

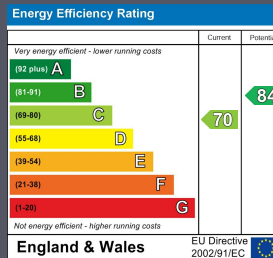
## Agents Notes

The seller has permission from Harlow Council to purchase two parcels of land adjacent to the property, one being directly next to the driveway to widen the drive and the second being a strip of land next to the front path to allow for a single story extension (subject to planning permissions).

## Local Area

Fir Park is a sought-after private development on the South West of Harlow located off of Kingsmoor Road close to local schooling and amenities.





Equity House  
 4-6 Market Street  
 Harlow  
 Essex  
 CM17 0AH  
 01279 400444  
 hello@clarknewman.co.uk